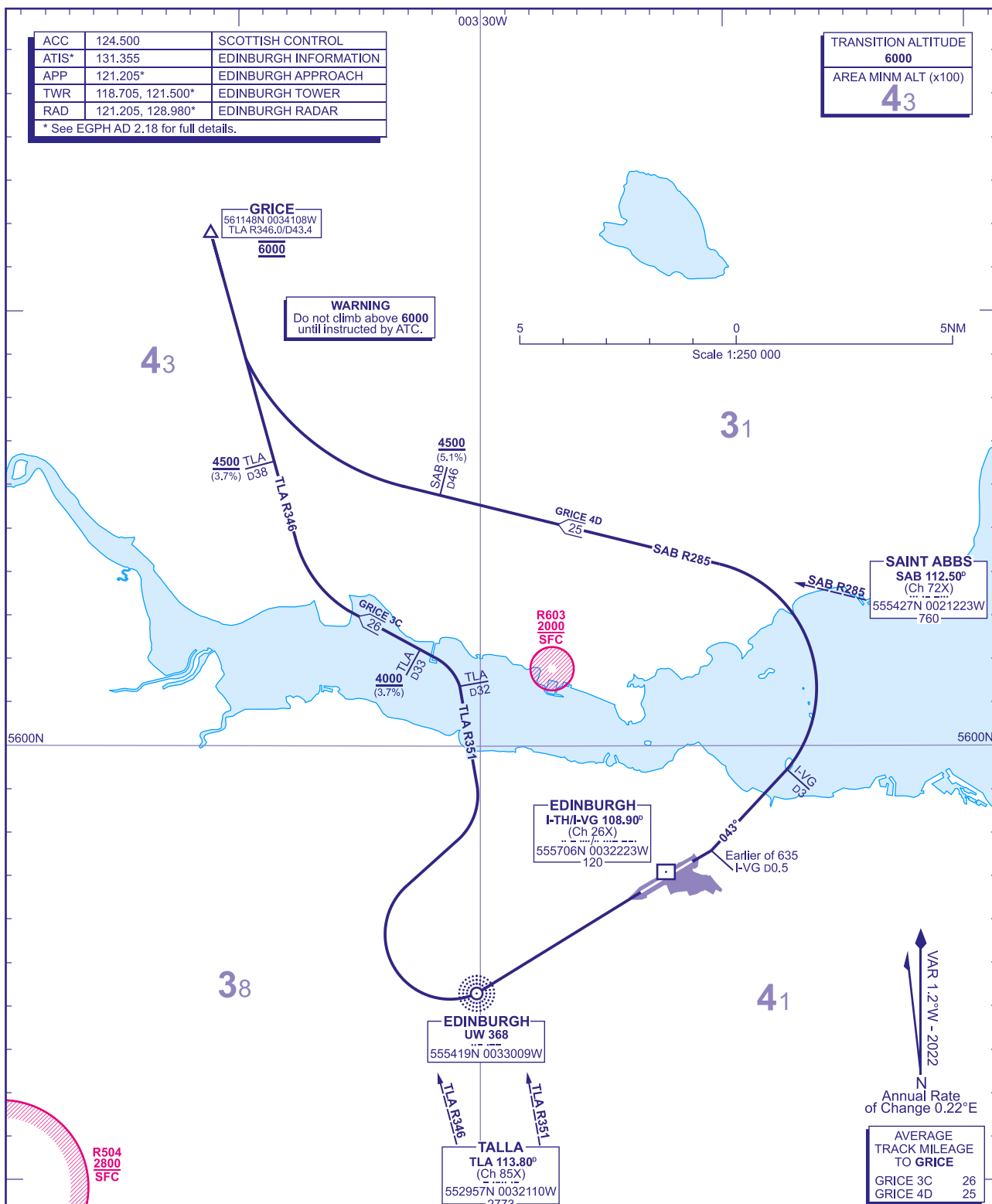
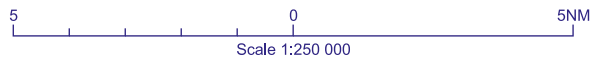


**EDINBURGH
GRICE**

TRANSITION ALTITUDE
6000
AREA MINM ALT (x100)
43

WARNING
Do not climb above 6000
until instructed by ATC.



AVERAGE TRACK MILEAGE TO GRICE	
GRICE 3C	26
GRICE 4D	25

GRICE 3C RWY 24	Climb straight ahead to UW NDB . At UW NDB turn right onto TLA VOR R351. At TLA D32 turn left to intercept TLA VOR R346 to GRICE . Cross TLA D33 or above 4000 (3.7%). Cross TLA D38 above 4500 (3.7%). Cross GRICE at 6000 .	P600 Eastbound and for A/C leaving CAS North of GRICE .
GRICE 4D RWY 06	Climb straight ahead to I-VG D0.5 or 635 QNH whichever is earlier, then turn left to track 043°. At I-VG D3, turn left onto SAB VOR R285. Cross SAB D46 above 4500 (5.1%) then turn right to intercept TLA VOR R346 to GRICE . Cross GRICE at 6000 .	P600 Eastbound and for A/C leaving CAS North of GRICE .

- 1 SIDs reflect Noise Preferential Routings. See EGPH AD 2.21 for Noise Abatement Procedures.
- 2 Climb gradients greater than 3.3% are, where indicated, required for obstacle clearance, ATC and airspace requirements.
- 3 Maximum 250KIAS below FL100 unless otherwise authorised.
- 4 En route cruising levels will be allocated after take-off by 'Scottish Control'. Report callsign, SID designator, current altitude and cleared altitude on first contact with 'Scottish Control'.
- 5 Expect first CPDLC Data Link Authority to be EGPX.

AD 2-EGPH-6-3